

TOYOTA & LEXUS RECOVERY POINT

P/N: 864

INSTALLATION INSTRUCTIONS

KIT CONTENTS:

Item Description	Qty.	Item Description	Qty.
Recovery Point - Driver	1	8mm x 20mm Hex Bolt	2
Recovery Point - Passenger	1	8mm Washer	2
3/8" x 1-1/4" Hex Bolt	6	12mm x 40mm Hex Bolt	2
3/8" Nylock Nut	6	12mm Washer	2
3/8" Washer	12	3/16" Spacer	2

TOOLS NEEDED:

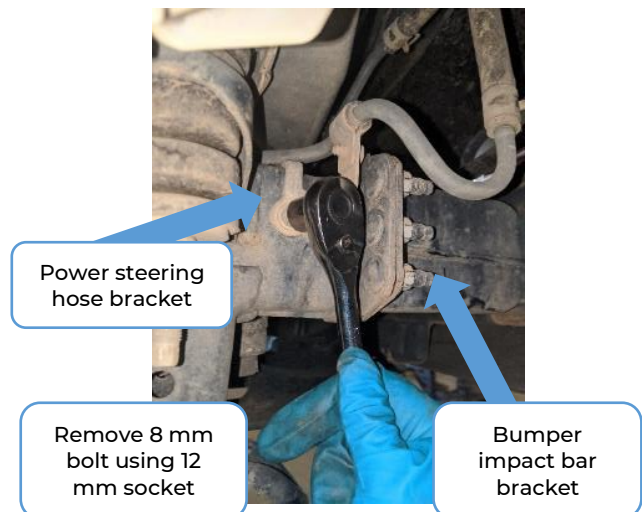
- SOCKET SET:
 - Ratchet
 - 12 MM
 - 13 MM
 - 14 MM
 - 19 MM
 - 9/16"
- HAMMER
- 9/16" WRENCH
- BREAKER BAR (OPTIONAL)
- Car jack/jack stands (OPTIONAL)



NOTE: A LIFT OR JACK STANDS IS NOT REQUIRED FOR INSTALLATION BUT IT DEFINITELY WILL HELP.

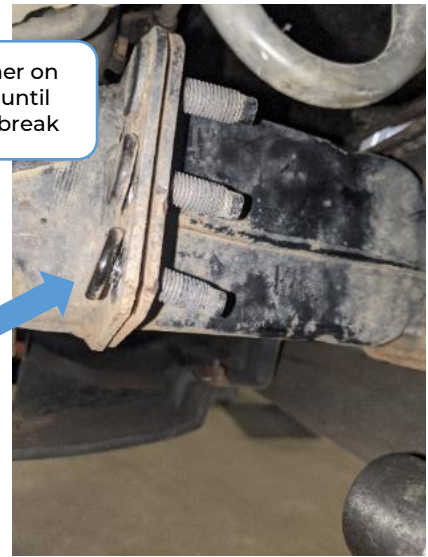
SECTION 1 – DISASSEMBLY:

1. Remove the 8 mm bolt from the power steering hose bracket – Replacement hardware included.
2. Move hose and bracket out of the way. Use zip tie or bungie cord if necessary.
3. Remove the three 14 mm nuts from bolts in bumper impact bar bracket using ratchet or breaker Bar.
4. Bolts are fixed to back plate by small spot welds. Use a hammer to break the bolt free from their welds. These bolts will not be reused.





Remove nuts from studs using 14 mm socket

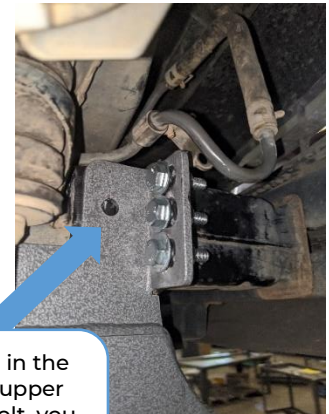
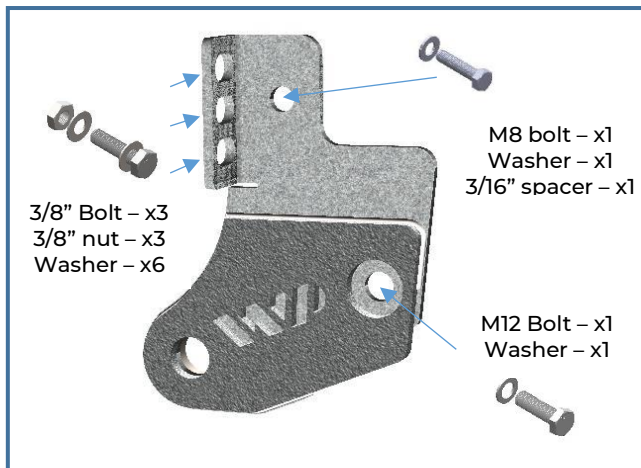


Hammer on studs until welds break

Studs will break loose and can be removed

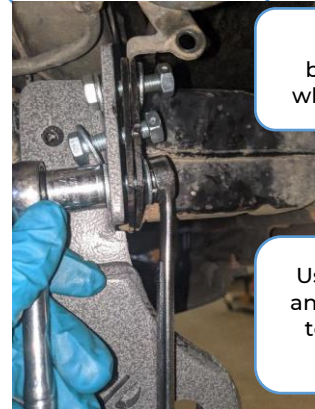
SECTION 2 - INSTALLING WARRIOR PRODUCTS RECOVERY POINTS:

NOTE: Refer to the following diagram for hardware locations



If bracket is in the way of the upper mounting bolt, you may relocate it or leave it loose

1. Insert bolts in the positions laid out in the diagram. To ensure alignment do not tighten any bolt all the way until other bolts/nuts/washers are in correct locations.
2. Begin tightening bolts, making sure to alternate between 12mm bolt and 3/8" bolts/nuts.
3. Using the 9/16" socket and 9/16" wrench, tighten the bolts on the bumper impact bar bracket.
4. Tighten remaining bolts until secure.
5. Repeat the same process for the other side of the vehicle.



Alternate between bolts when tightening

Use 9/16" socket and 9/16" wrench to tighten 3/8" bolts

THANK YOU FOR PURCHASING WARRIOR PRODUCTS

If you need further assistance installing your product, please contact us by email at customerservice@warriorproducts.com or call us at (888) 220-6861.



WARRIORPRODUCTS.COM

